

**HIGHER QUALITY
BETTER SERVICE**

CERTTREE

QUESTION & ANSWER



Provide One Year
Free Update!

<https://www.certtree.com>

Exam : **C2090-013**

Title : IBM SPSS Modeler Data
Mining for Business
Partners v2

Version : DEMO

1.How many phases are in the CRISP-DM Process Methodology?

- A. Four
- B. Five
- C. Six
- D. Seven

Answer: C

2.True or false: the CRISP-DM Process Methodology is a linear process.

- A. True
- B. False

Answer: B

3.Which node is used to read data from a comma delimited text file?

- A. Var. File
- B. Data Collection
- C. Fixed File
- D. Statistics File

Answer: A

4.Examine the Data Audit output shown below.

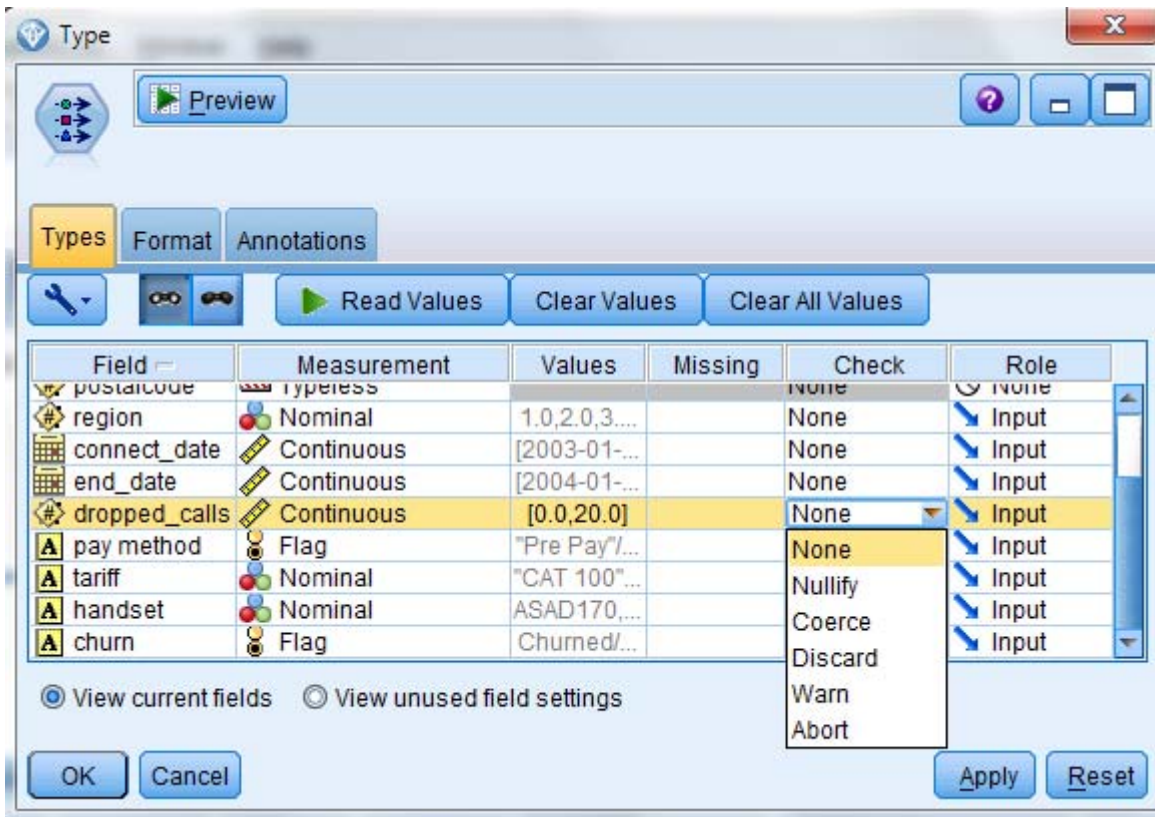
| Field | Measurement | Outliers | Extremes | Action | Impute Mi... | Method | % Complete | Valid |
|---------------|-------------|----------|----------|---------|--------------|--------|------------|-------|
| ACCOM | Nominal | -- | -- | | Never | Fixed | 100 | |
| COUNTRY | Nominal | -- | -- | | Never | Fixed | 100 | |
| CUSTID | Nominal | -- | -- | | Never | Fixed | 100 | |
| DIST_TO_BE... | Continuous | 1 | 0 | None | Never | Fixed | 100 | |
| DOB | Nominal | -- | -- | | Never | Fixed | 100 | |
| GENDER | Nominal | -- | -- | | Never | Fixed | 98.681 | |
| HOLCODE | Nominal | -- | -- | | Never | Fixed | 100 | |
| HOLCOST | Continuous | 9 | 1 | Discard | Never | Fixed | 97.889 | |
| NAME | Nominal | -- | -- | | Never | Fixed | 100 | |
| NIGHTS | Continuous | 0 | 0 | Nullify | Never | Fixed | 100 | |
| NUMPARTY | Continuous | 6 | 0 | None | Never | Fixed | 100 | |
| POOL | Flag | -- | -- | | Never | Fixed | 100 | |
| REGION | Nominal | -- | -- | | Never | Fixed | 100 | |
| TRAVDATE | Nominal | -- | -- | | Never | Fixed | 100 | |

What action will occur in a generated Outlier & Extreme Supernode for HOLCOST?

- A. Nine records will be set to the system missing (null) value for HOLCOST.
- B. Ten records will be deleted.
- C. Ten records will be set to the system missing (null) value for HOLCOST.
- D. Nine records will be deleted.

Answer: B

5. Given the Type node shown below, what specifications are necessary to change all values outside the range 1 to 15 in field dropped_calls to the undefined (\$null\$) value?



- A. Pass Values and Check action Nullify
- B. Specify Values Lower 1 and Upper 15 and Check action Nullify
- C. Specify Values Lower 1 and Upper 15 and Check action Discard
- D. Read Values and Check action Warn

Answer: B